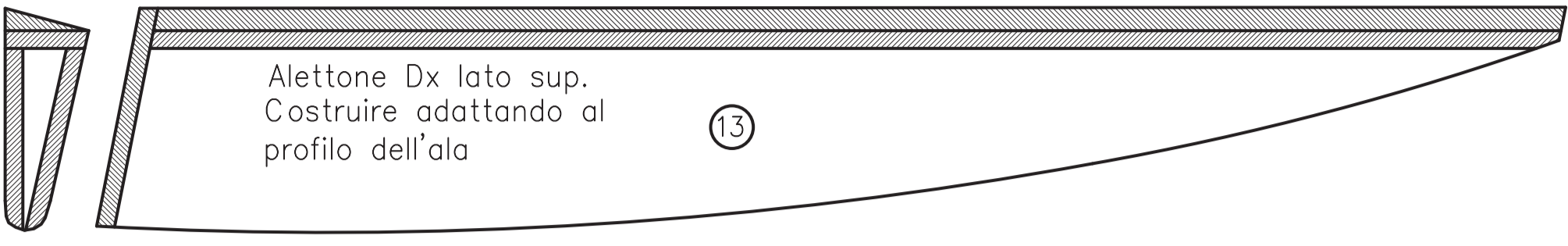


Sezione sulla centina 3

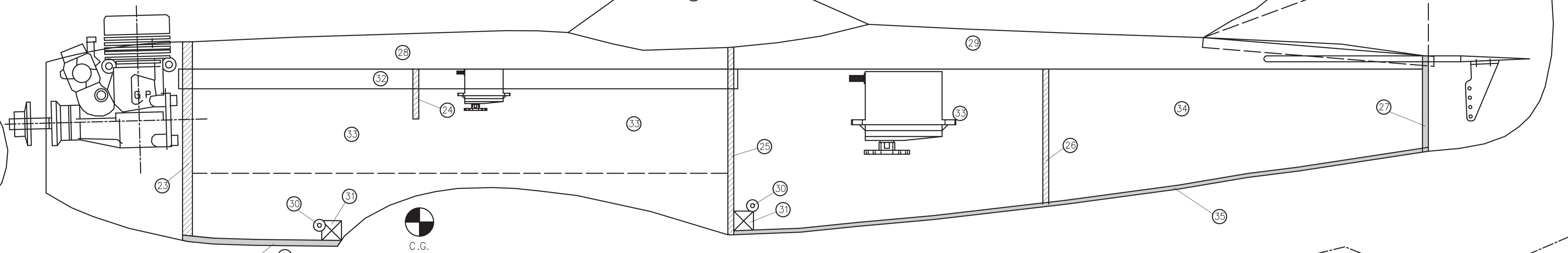
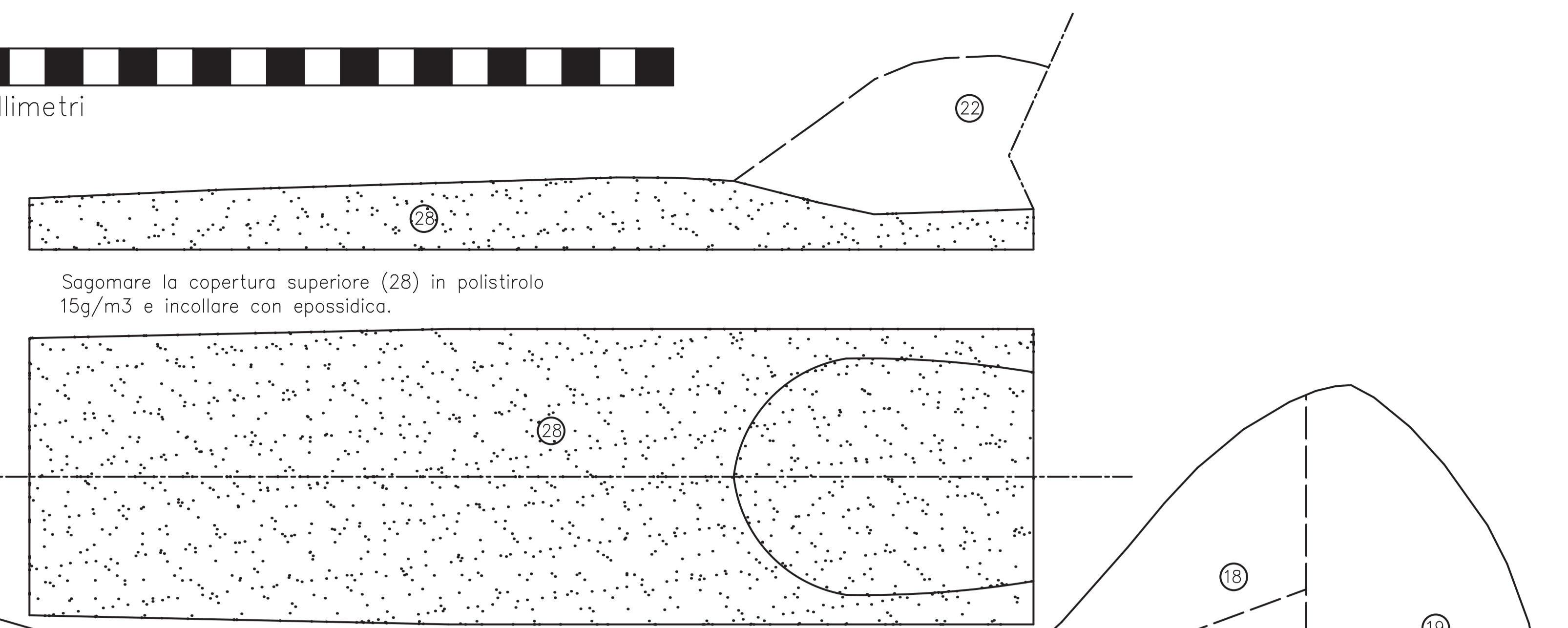
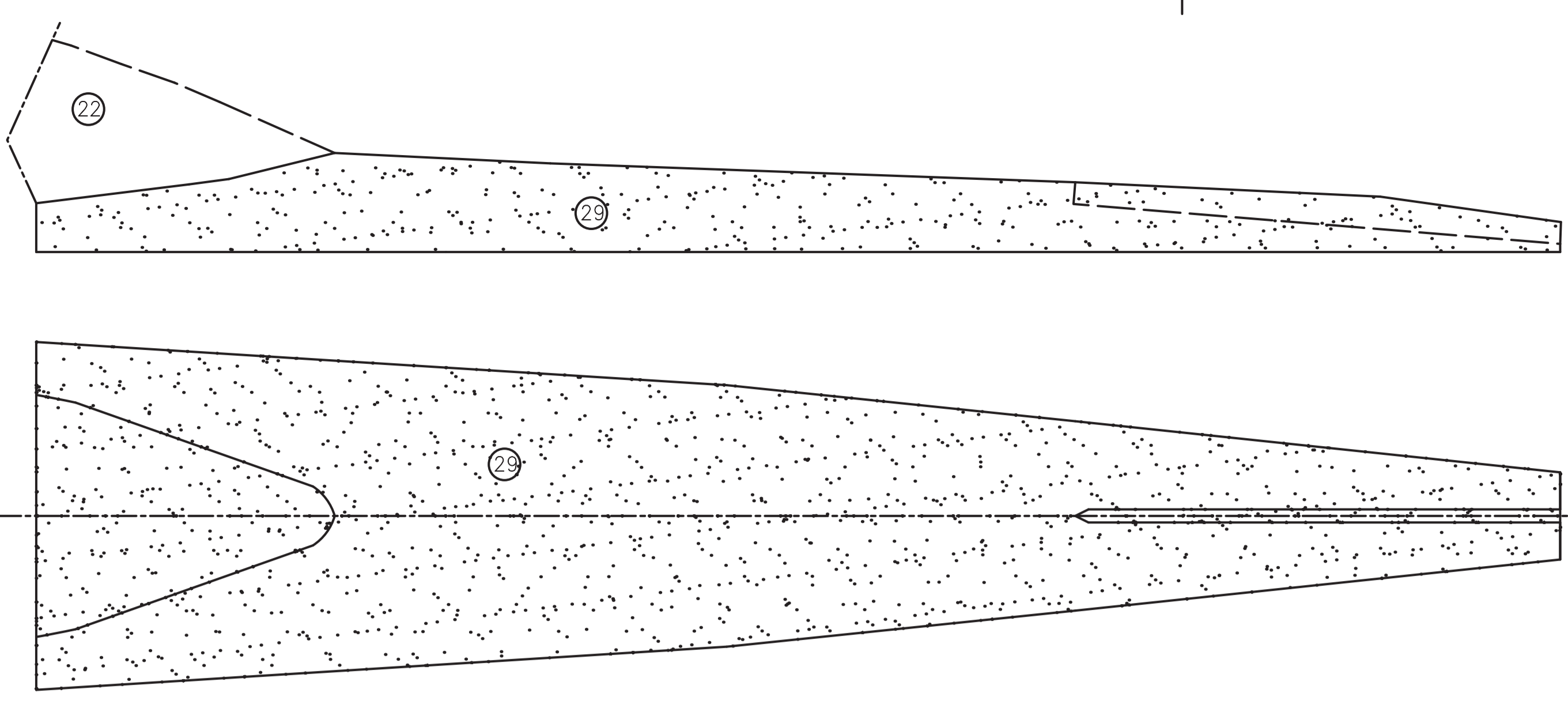
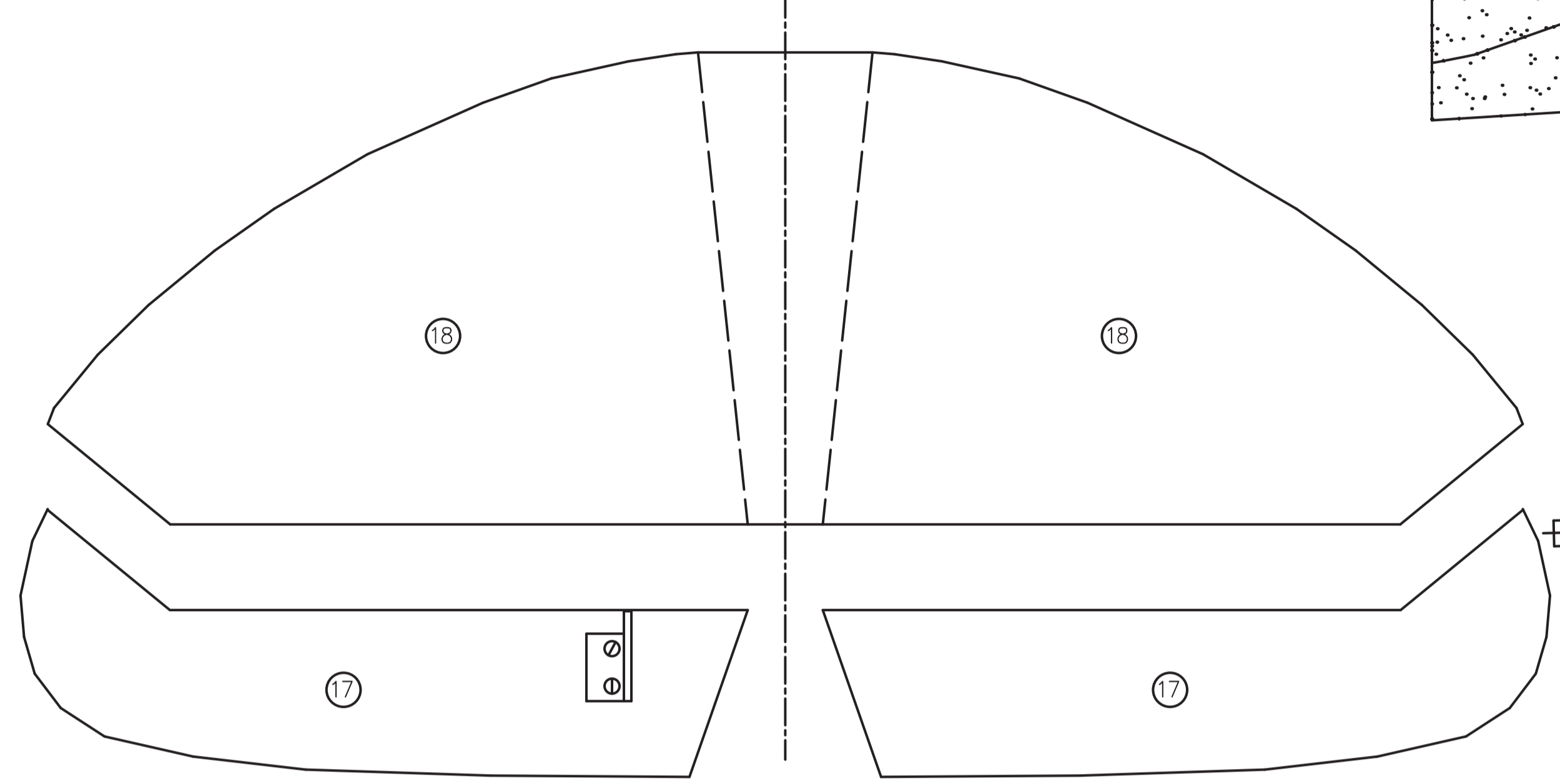


Alettone Dx lato sup.
Costruire adattando al
profilo dell'ala



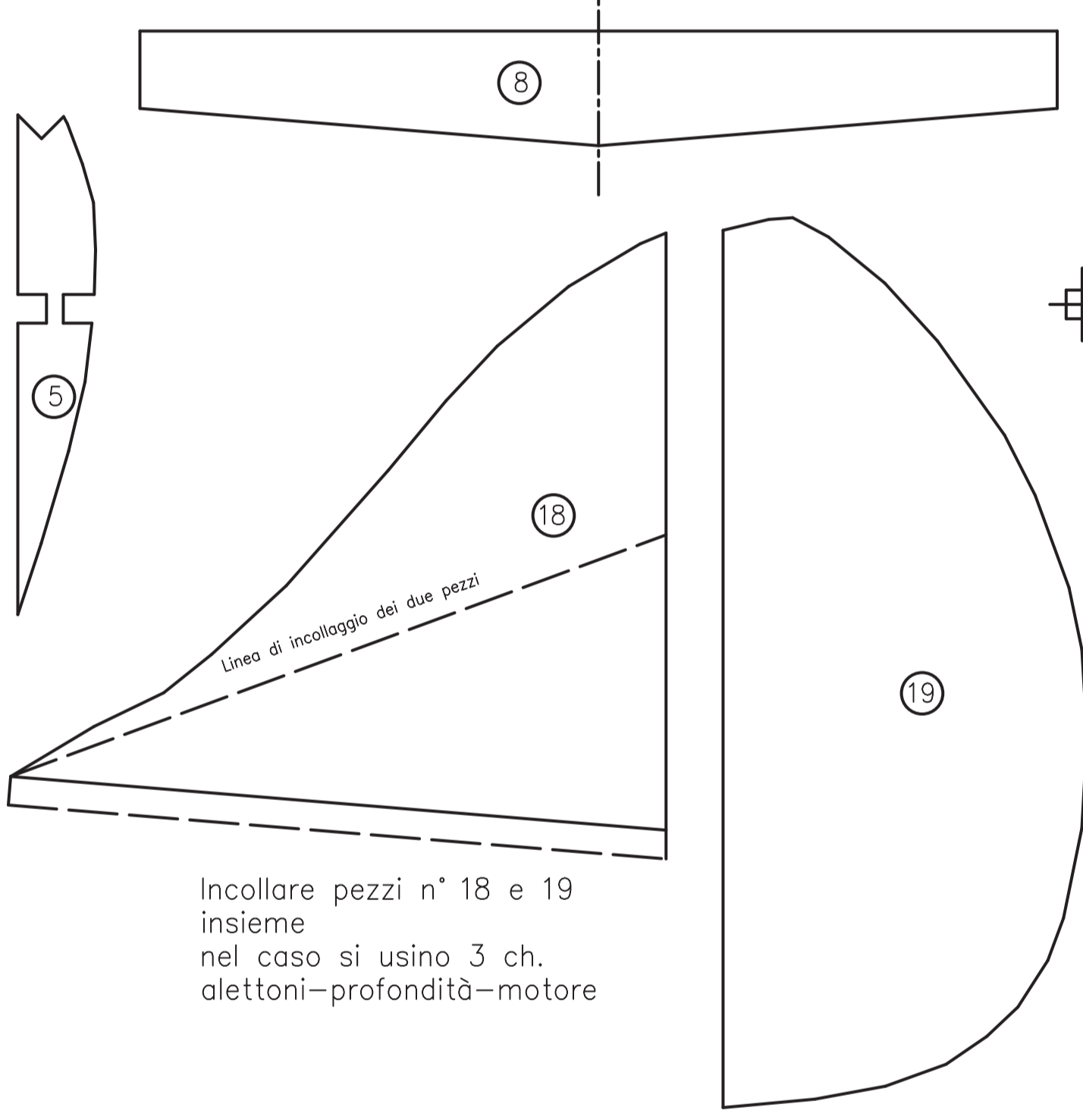
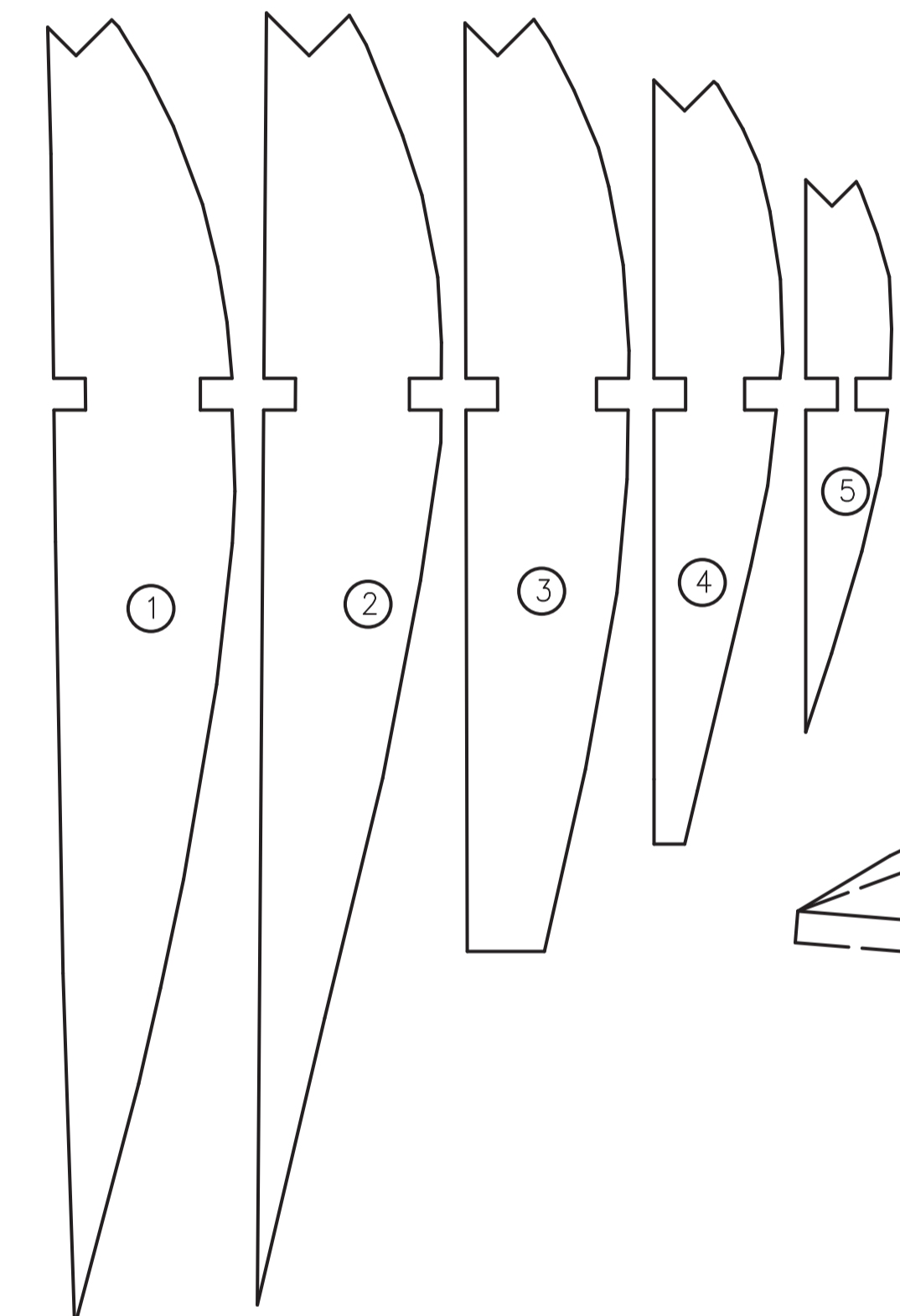
Millimetri

Sagomare la copertura superiore (28) in polistirolo
15g/m³ e incollare con epossidica.

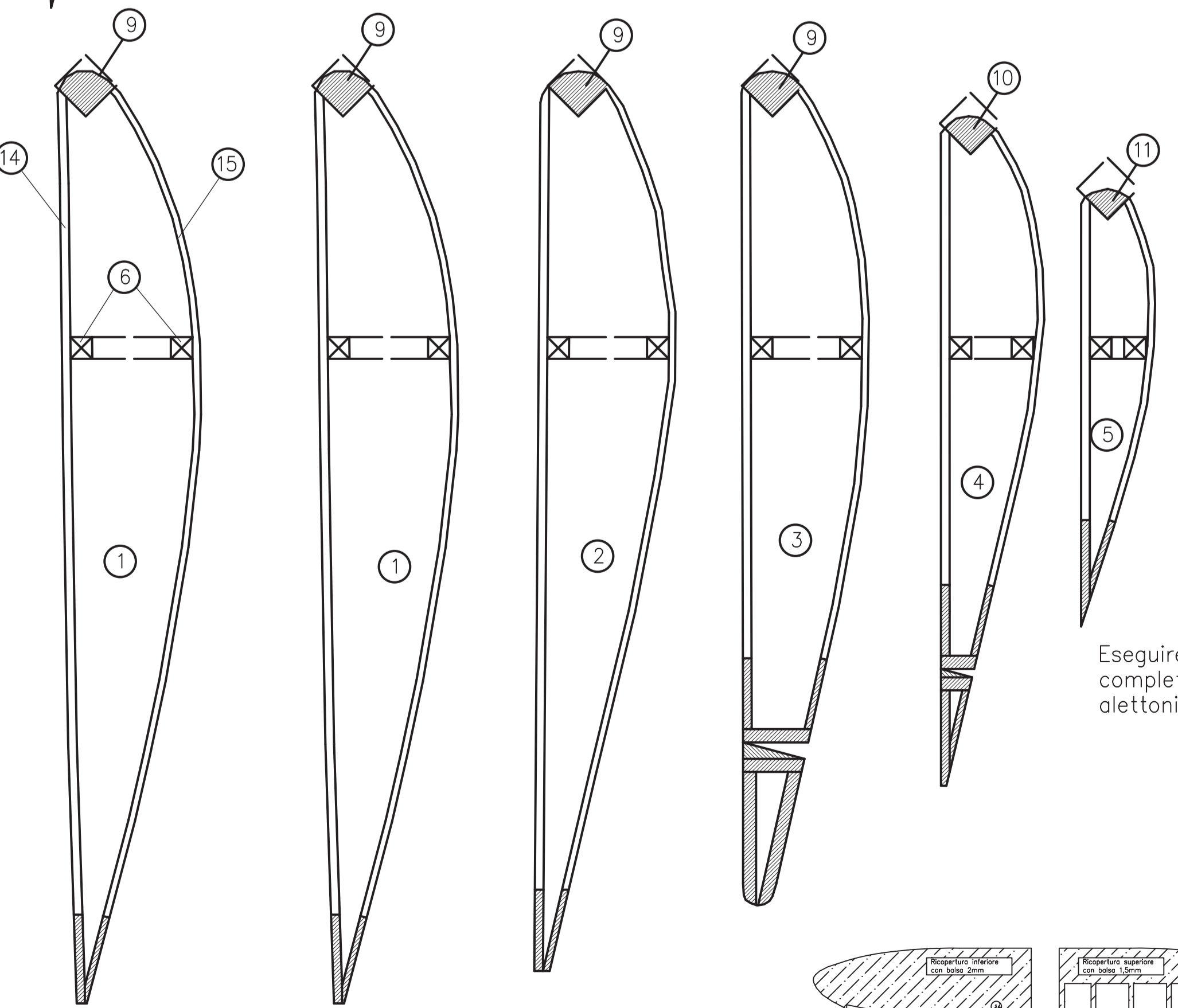


C.G.

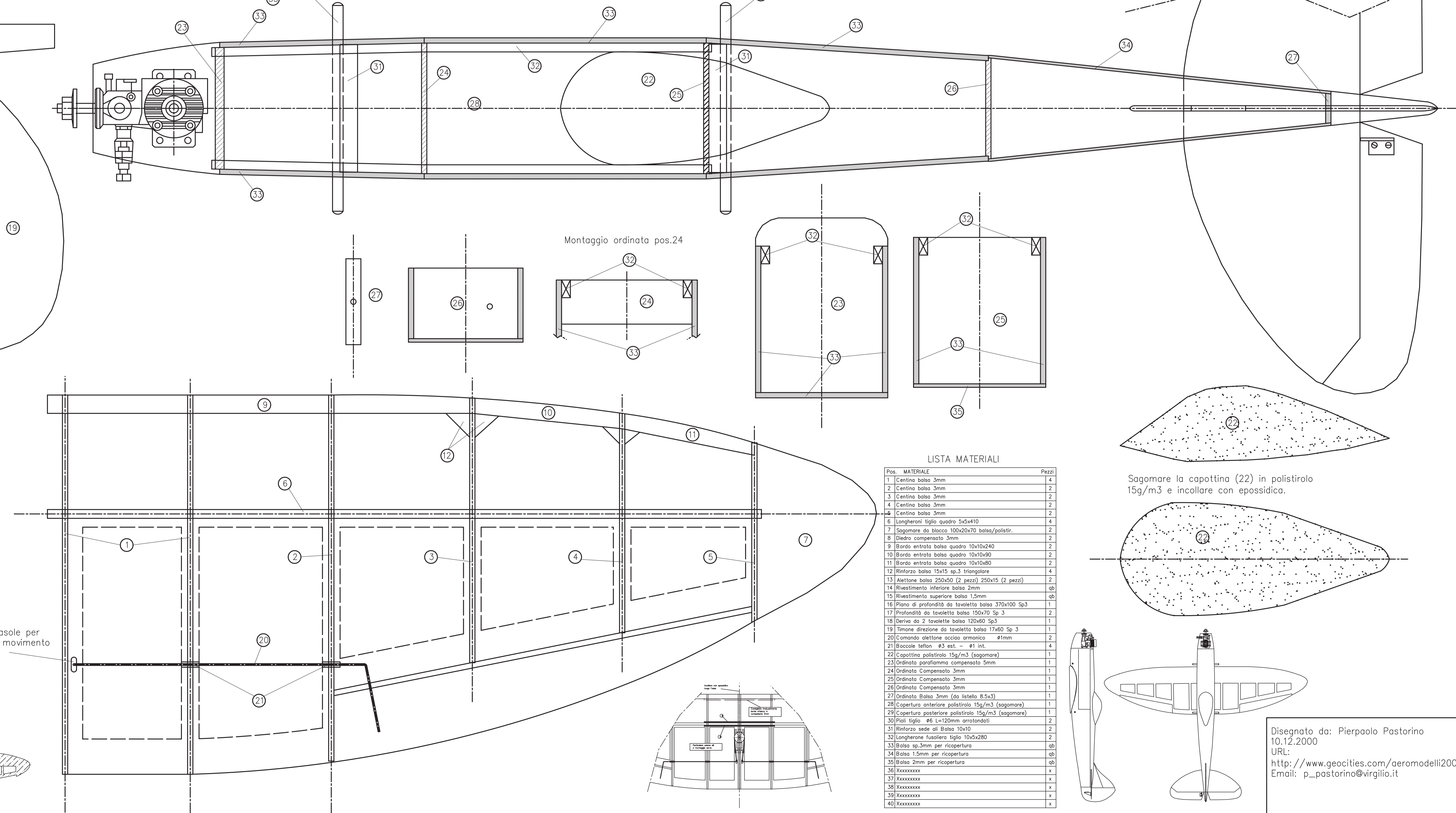
Maschere per taglio centine



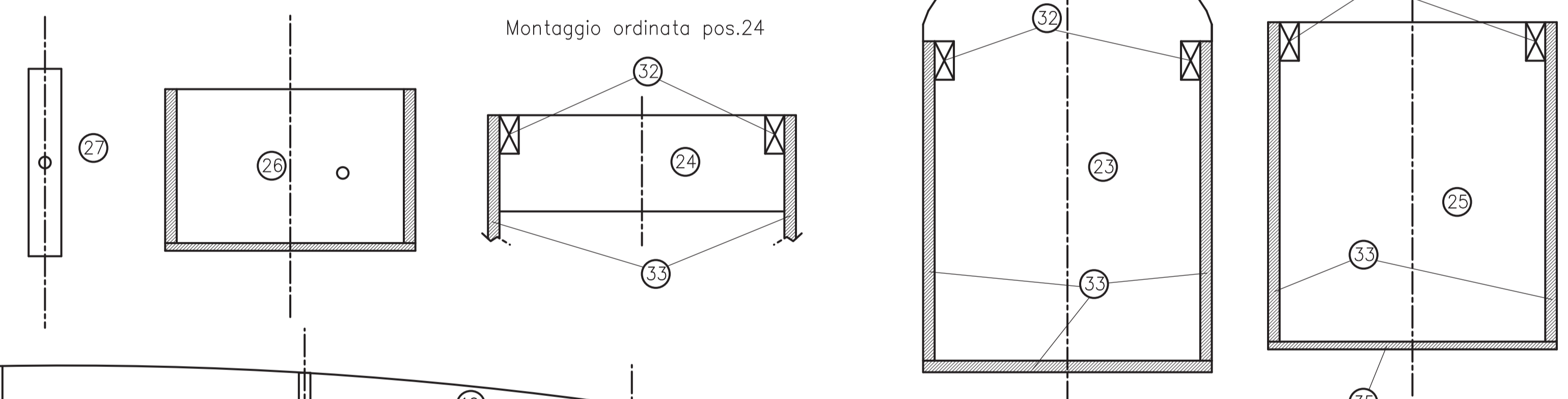
Incollare pezzi n° 18 e 19
insieme
nel caso si usino 3 ch.
alettoni-profondità-motore



Sezioni ala su intersezione centine



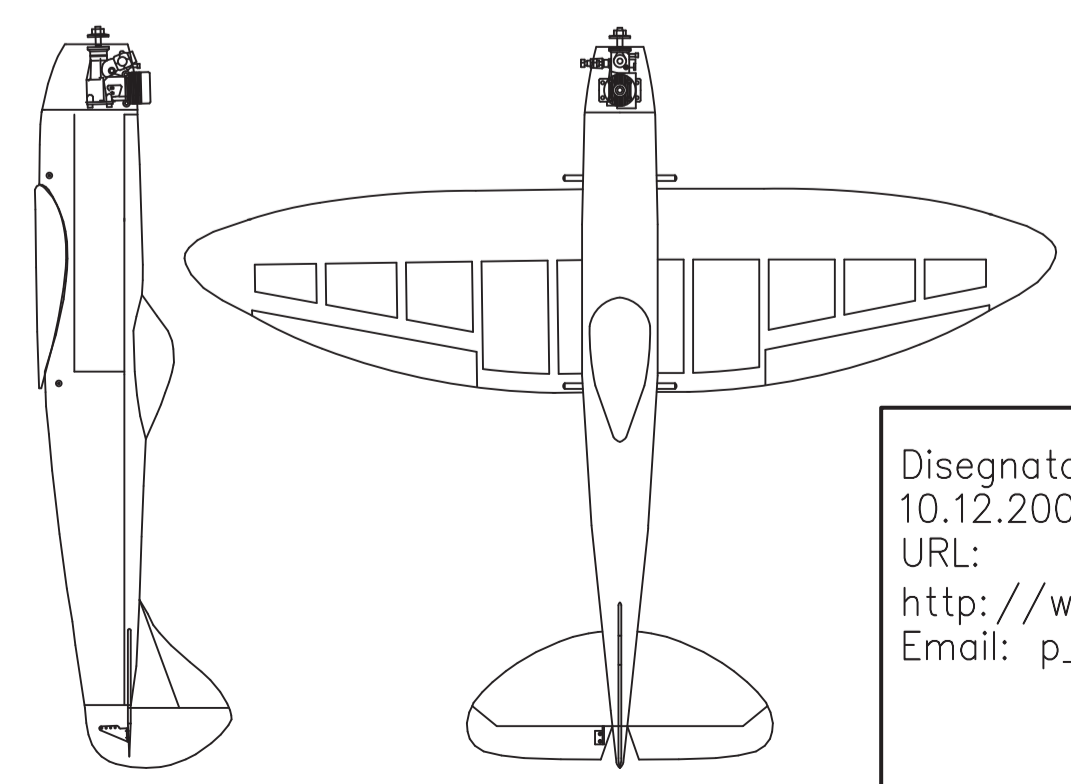
Montaggio ordinata pos.24



LISTA MATERIALI

Pos.	MATERIALE	Pezzi
1	Centina balsa 3mm	4
2	Centina balsa 3mm	2
3	Centina balsa 3mm	2
4	Centina balsa 3mm	2
5	Centina balsa 3mm	2
6	Longheroni tiglio quadro 5x5x410	4
7	Sagomare da blocco 100x20x70 balsa/polistr.	2
8	Esadro compensato 3mm	2
9	Bordo entrata balsa quadro 10x10x240	2
10	Bordo entrata balsa quadro 10x10x90	2
11	Bordo entrata balsa quadro 10x10x80	2
12	Rivestire balsa 15x15 sp.3 frangibile	4
13	Alettone balsa 250x50 (2 pezzi) 250x15 (2 pezzi)	2
14	Rivestimento inferiore balsa 2mm	qb
15	Rivestimento superiore balsa 1,5mm	qb
16	Piano di profondità da tavolette balsa 370x100 Sp3	1
17	Profondità da tavolette balsa 150x70 Sp 3	2
18	Deriva da 2 tavolette balsa 120x60 Sp3	1
19	Timone direzione da tavolette balsa 17x60 Sp 3	1
20	Carmona alettone acciaio armonico	2
21	Boccole teflon ø3 est. - ø1 int.	4
22	Capottino polistirolo 15g/m ³ (sagomare)	1
23	Ordinata paraffinoma compensato 5mm	1
24	Ordinato Compensato 3mm	1
25	Ordinato Compensato 3mm	1
26	Ordinato Compensato 3mm	1
27	Ordinato Balsa 3mm (da listello 8,5x3)	1
28	Copertura superiore polistirolo 15g/m ³ (sagomare)	1
29	Copertura posteriore polistirolo 15g/m ³ (sagomare)	1
30	Poli tiglio ø6 L=120mm arrotondati	2
31	Rinforzo sede all. Balsa 10x10	2
32	Longherone tavniera tiglio 10x5x280	2
33	Balsa sp.3mm per ricopertura	qb
34	Balsa 1,5mm per ricopertura	qb
35	Balsa 2mm per ricopertura	qb
36	XXXXXXXX	x
37	XXXXXXXX	x
38	XXXXXXXX	x
39	XXXXXXXX	x
40	XXXXXXXX	x

Sagomare la capottina (22) in polistirolo
15g/m³ e incollare con epossidica.



Disegnato da: Pierpaolo Pastorino
10.12.2000
URL:
<http://www.geocities.com/aeromodelli2000/>
Email: p_pastorino@virgilio.it